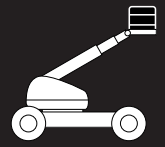




STRAIGHT BOOM

80' & 80' + 6'



SPECIFICATIONS

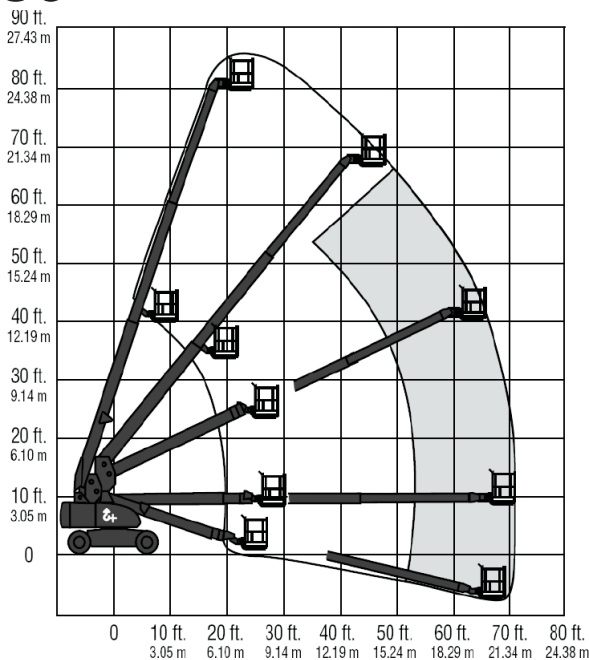
MODEL	80'	80' X-AXLE	80' + 6'
PLATFORM HEIGHT	80'	80'	86'
WORKING HEIGHT	86'	86'	92'
HEIGHT STOWED	9' 9"	9' 7"	9' 7"
WIDTH AXLES EXTENDED	N/A	10'	10'
WIDTH AXLES STOWED	8' 6"	8'	8'
LENGTH STOWED	35' 3"	33' 7"	36' 9"
WHEELBASE	108"	120"	120"
PLATFORM SIZE	36" x 72"	36" x 72"	36" x 72"
TURNING RADIUS OUTSIDE	20' 2"	25' 5"	25' 5"
TAIL SWING	3' 7"	2' 11"	2' 11"
TRAVEL SPEED - STOWED	5.1 KPH	5.6 KPH	5.6 KPH
GRADE ABILITY	25%	25%	25%
GROUND CLEARANCE	14"	10"	10"
PLATFORM CAPACITY	500 lb	500 lb	500 lb
WEIGHT	38,200 lb	30,600 lb	33,850 lb

FEATURES INCLUDE

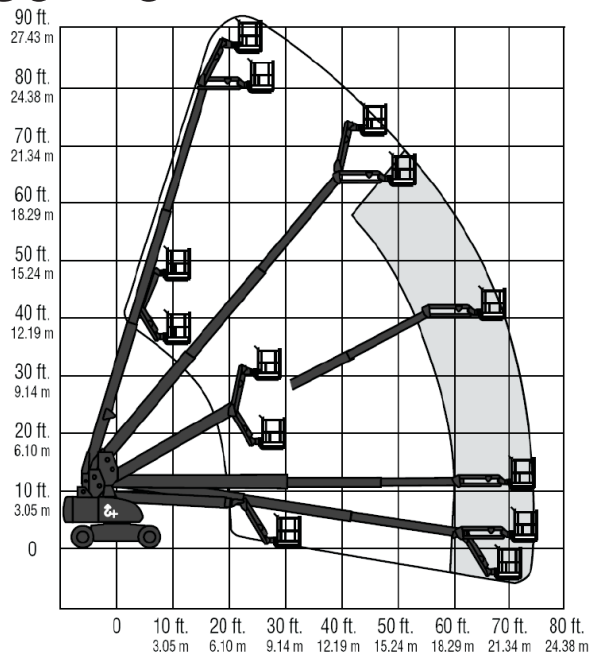
- Painted Flat Black
- Available Cable Rollers
- Equipped with Full Night Light Package
- Available Condor Mount
- Available Under-slung Truss System
- Electrical Outlet on Platform
- Ground Controls

REACH CHART

80'



80' + 6'



*Data presented serves as a guide ONLY and not a substitute for equipment manuals, call 416.287.3107 for specific needs.

*Subject to change without notice.