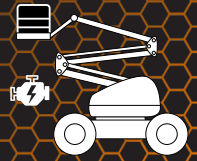




# ARTICULATING BOOM 80' HYBRID



## SPECIFICATIONS

### REACH SPECIFICATIONS

PLATFORM HEIGHT	80'
HORIZONTAL OUTREACH	51' 10"
SWING - CONTINUOUS	360°
PLATFORM CAPACITY	500 LB
PLATFORM ROTATION	180°

### DIMENSIONAL SPECIFICATIONS

PLATFORM SIZE	36" X 96"
OVERALL WIDTH	8' 2"
TAIL SWING	3' 6"
STOWED HEIGHT	9' 10"
OVERALL LENGTH	36' 6"
WHEEL BASE	10'
GROUND CLEARANCE	11"
OPERATING WEIGHT	35,520 LB

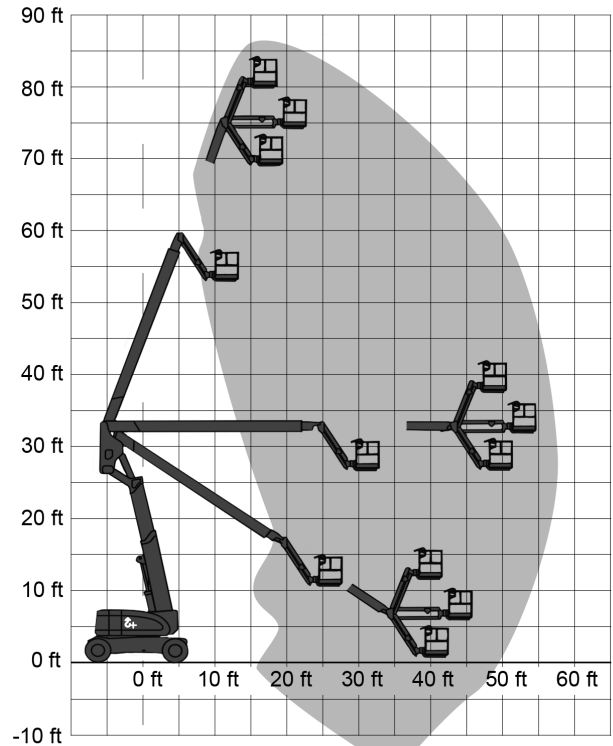
### GENERAL SPECIFICATIONS

GRADEABILITY	45%
DRIVE SPEED - LOWERED	5.55 KPH
OUTSIDE TURNING RADIUS	19' 8"

## FEATURES INCLUDE

- Painted Flat Black
- Available Cable Rollers
- Ground Controls
- Available Condor Mount
- Available underslung truss system
- Equipped with full night light package
- Electrical outlet on platform
- Up to 500 lbs lifting capacity

## REACH CHART



\*Data presented serves as a guide ONLY and not a substitute for equipment manuals, call 416.287.3107 for specific needs.  
\*Subject to change without notice.