



120' STRAIGHT TELESCOPING BOOMS

Specifications

Reach Specifications

Platform Height	120 ft
Horizontal Reach	75 ft
Continuous Swing	360 Deg
Platform Capacity Restricted	1,000 lb
Platform Capacity Unrestricted	500 lb
Platform Rotation	180 deg
Jib Plus Length	8 ft
Horizontal Motion	180 deg
Vertical Motion	130 deg

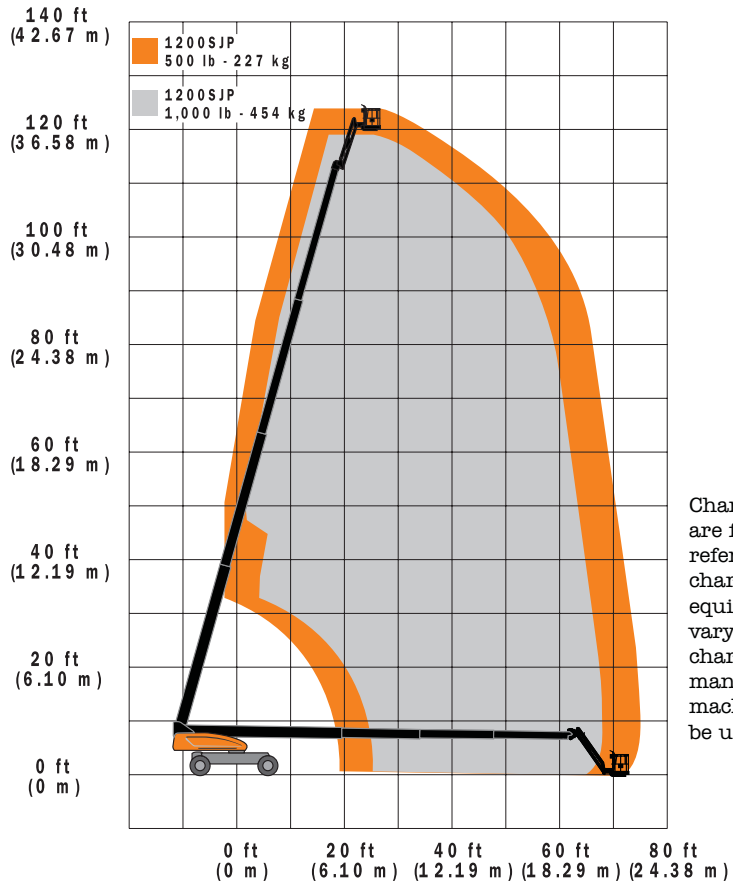
Dimensional Specifications

A. Platform Size	36 x 96in
B. Overall Width	Axles Retracted: 8 ft 2 in Axles Extended: 12 ft 6 in
C. Tail swing	5 ft 6 in
D. Stowed Height	10 ft
E. Overall Length	Jib Stowed: 34 ft 11 in Jib Deployed: 44 ft 10 in
F. Wheel Base	12 ft 6 in
G. Ground Clearance	Axle: 12 in Chassis: 25.5 in
Operating Weight	40,900 lb

General Specifications

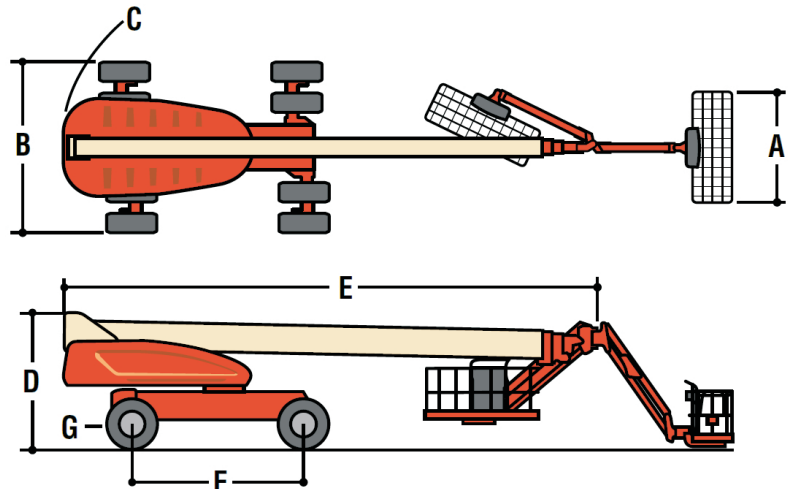
Max Ground Bearing Pressure	99 psi
Gradeability	45 %
Drive Speed	5.2 kph

Range Chart



Charts shown are for reference only, charts of rented equipment may vary and the charts and manuals in each machine **MUST** be used.

Dimensions



- Crab, 4 Wheel and 2 Wheel Steering
- 4 Wheel Drive
- Flat Black Boom and Basket
- Work Lights

SUBJECT TO CHANGE WITHOUT NOTICE